



M E S S A G E S



Syed Babar Ali,
Pro Chancellor, LUMS

I FEEL fortunate to have been involved in the establishment of LUMS twenty-five years ago. We had unwavering support of many people in this initiative especially:

Chaudhry Nazar Mohammad of Service Industries, Mr. Abdul Razak Dawood, Dr. Parvez Hassan, Mr. M.R. Khan (then Chairman of the Banking Council), Mr. Nizam Shah (then Chairman of Pakistan Tobacco Company), Mr. Naseem Mirza (then Chairman of ICI Pakistan), Mr. Yusuf Shirazi (Chairman of the Shirazi Group) and Mr. D.M. Qureshi (then Chairman of Industrial Development Bank of Pakistan).

Mr. Javed Hamid led the project. The solid foundation laid at that time has enabled LUMS to develop into an institution which has brought credit to Pakistan.

LUMS has been evolving and adapting to change owing to its commitment to merit, tolerance and diversity. It has provided an environment which encourages debate and intellectual dialogue and strives for excellence in education and quality research.

Our recently launched School of Science & Engineering (SSE) builds upon the success of the Suleman Dawood School of Business (SDSB) and School of Humanities, Social Sciences and Law (SHSSL).

It is our prayer that LUMS adheres to its basic commitment to quality and fairplay.



Abdul Razak Dawood,
Rector, LUMS

25 years later, I still vividly remember how LUMS was established. A meeting with Syed Babar Ali was the first step towards this remarkable journey, a journey that has been thoroughly fulfilling.

Abiding by our cardinal rule, adherence to merit has made LUMS a well-reputed institute in just 25 years. Our insistence on quality of students coming in based purely on merit, and holding out incidents of referral has helped this institute maintain its quality. Good students, good faculty and good environment are what contributed to LUMS as a brand name.

The success of LUMS is greatly owed to the endeavours of our dedicated faculty. Our founding professors were all PhDs or PhD students from USA and UK and were on the same wave length as us in terms of the vision for LUMS. Their perseverance helped in developing the solid alumni base that LUMS is proud of today. The university has over 5000 alumni, each of whom have excelled in their fields, contributing to LUMS in general and the society as a whole. Their continual support to LUMS in the form of class gifts and funds speaks volumes of their generosity and commitment to their alma mater.

I hope that LUMS faculty, staff, alumni and students continue to contribute towards the success of this university and wish LUMS prosperous years ahead.



Ahmad Jan Durrani,
Vice Chancellor, LUMS

AS LUMS approaches its twenty-fifth year of existence, the university and its stakeholders can justly view its first quarter-century with pride. LUMS has grown steadily since its birth, adding students, faculty members, disciplines, and schools, with plans for more of each firmly ensonced in its institutional culture.

The university has attained national and international recognition as Pakistan's foremost institution of higher education, launching its graduates onto successful professional and academic careers in Pakistan and abroad. The National Outreach Programme (NOP) has proven extraordinarily successful in its efforts to open the gates of LUMS to the most promising students of Pakistan regardless of socioeconomic class or ethnic origin.

Yet for LUMS to advance toward its stated vision of providing "a fountain of leadership for Pakistan and the world," the institution must continue to evolve.

LUMS must become an international research university, with a focus on undergraduate and graduate education and an ability to incubate future leaders in a variety of fields.

It must ensure that even as it grows it maintains the dynamism that has characterized its first twenty-five years. Progress will require broader strategic planning, an ambitious research agenda, and the development of an integrated and unified institutional culture. We are taking steps already to pursue these goals.

We are promoting a research vision with high impact on Pakistan and the region, centered on areas of critical national need. To expand the university's scope, we are building capacity. To ensure that LUMS achieves its goals, we are launching a multifaceted system for assessing and improving institutional effectiveness. And to align the activities of the university and its students closely with the values embedded in the LUMS mission, we are promoting civic engagement.

Our opportunities are plentiful, and our vision ambitious. With strong leadership and commitment to our institutional vision, I am confident that LUMS' development in its next twenty-five years will be even more remarkable than it has been in its first quarter-century.

LUMS at a glance

About LUMS

— The National Management Foundation, the sponsoring body of the university, was set-up in November 1984 and granted a charter by the Government of Pakistan for establishing the University in March 1985, with the president of Pakistan being designated the role of the University's Chancellor.

— In 1986, Lahore Business School (now known as

LUMS) launched its Business School offering world-class MBA programme (the school has been renamed as the Suleman Dawood School of Business).

— In 1989, the Business School started the Executive Education Programme.

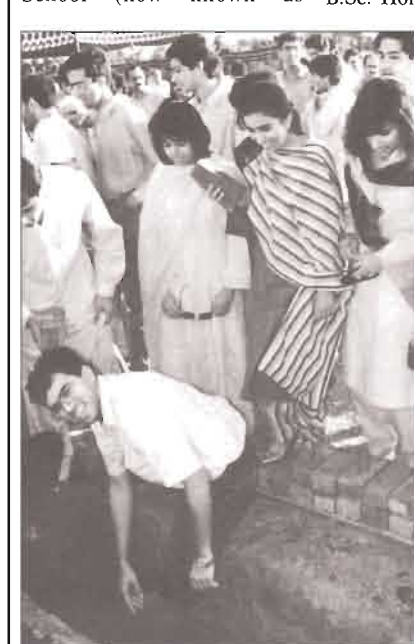
— In 1993, the purpose-built campus of LUMS was built in DHA which is sprawled over a hundred acres.

— In 1994, LUMS started a B.Sc. Honours Programme in

Economics and Computer Science. Over subsequent years this evolved to include more specializations. — Raising family of Sweden donated the Raising Executive Development Centre which became fully functional in 1994.

— In 1995, first batch of transfer and visiting students was accepted.

— In 1996, the School of Arts and Sciences (SOAS) was formed to oversee the undergraduate programme at LUMS. Later on, masters programmes in various disciplines were added.



STUDENTS at the foundation laying ceremony of the new campus outside LCCHS in 1990.

Continued on
Page 2



Lahore University of Management Sciences

LUMS provides world-class education to its students with the help of its highly acclaimed faculty, innovative curriculum and state of the art facilities. The three schools at LUMS are:

Suleman Dawood School of Business (SDSB)

The Suleman Dawood School of Business (SDSB) is a leading business school in South Asia offering:

BSc (Honours)

- Accounting & Finance

MBA

- Executive MBA

PhD Management

- Organisational Behaviour /Strategy & Organisation
- Operations Management

School of Humanities, Social Sciences and Law (SHSSL)

The School of Humanities, Social Sciences and Law (SHSSL) offers a unique learning opportunity with the following degree programmes:

BSc (Honours)

- Anthropology/Sociology
- Economics
- Economics & Politics
- Humanities
- Political Science

BA-LL.B

MSc

- Economics

School of Science and Engineering (SSE)

The School of Science and Engineering (SSE) is the first private research school for science and engineering in Pakistan. It has excellent research-active faculty, and is committed to creating useful knowledge for solving problems of the 21st century. It has a need-blind admission policy; and its mission is to become a doorway to opportunity for students from underprivileged backgrounds.

BS

- Biology
- Chemistry
- Computer Science
- Electrical Engineering
- Mathematics
- Physics

MS

- Computer Science
- Computer Engineering

PhD

- Computer Science
- Computer Engineering
- Mathematics

Lahore University of Management Sciences

Sector 'U' DHA, Lahore Cantt. 54792 Pakistan

Phone: 042-111-11-LUMS(5867), 042-35608000, Fax: 042-35725048

Email: admissions@lums.edu.pk

LUMS at a glance

Continued from Page 1

— In 1997, LUMS launched the B.Sc. honours degree offering a major in Social Sciences. 10. In 1998, LUMS launched the M.S. degree in Computer Sciences.
 — In 2000, Mathematics major and Accounting and Finance minor were introduced in the B.Sc. (Hons) programme.
 — In 2002, a five year, integrated, BA-LL.B. degree was included to the list of programmes offered by the school.
 — In 2006, SOAS was renamed as School of Humanities, Social Sciences and Law (SHSSL).
 — School of Science and Engineering was launched in 2006 and the first batch of B.S. programme joined in 2008.
 — Employee Strength: 563
 — Total number of fulltime faculty members: 100
 — Total number of professional staff members: 463

Campus and Facilities

— LUMS offers on-campus housing to its faculty. There are six faculty residential blocks providing high quality 2-3 bedroom apartments.
 — LUMS has 6 male and 3 female hostels for students who live on-campus. The girls hostels accommodate a total of 414 students in 3 wings. The boys hostels accommodate a total of 1166 students in 6 wings.
 — In addition to the academic and residential buildings, there are sports fields and a state-of-the-art Sports Complex. The options of tennis, squash, gym, football, volleyball, cricket, basket ball and more are available to users to choose from.
 — LUMS has the first automated library of Pakistan that is rich with resources ranging from journal access, books, newspapers etc. It has a collection of approximately 200,000 books (128,000 E-Books), 475 Journals (35,000 E-Journals) and 70 online databases approximately.
 — LUMS has its own community mosque which is open 24/7, and carries out sermons in both Arabic and Urdu. The beautifully built mosque has separate prayer facilities for men and women.
 — The new SDSB building is under construction. The plan

has 6 floors, basement, 2 auditoriums (300 students capacity), 8 class rooms (80 students capacity each), faculty offices, meeting rooms, lounge and conference room.
 — The new SSE building is partially open. It has auditoriums, offices, labs (consistent with European and American standards), sound proof and resistant structure conducive to sensitive experiments.
 — LUMS campus also has a super store, a *khokha* (canteen), a food court with counters form popular restaurants of Lahore as well as banking facilities.

Recent Initiatives [July 2008- Present]

— LUMS has adopted two major changes in sync with international universities: Residential Colleges Model and Quarter to Semester switch.
 — Office of Sports, Wellness & Recreation has been set-up and the Sports Committee has been reformed under the patronage of the Vice Chancellor.
 — LUMS now has a fully operational Emergency Medical System set up and managed entirely by a dedicated group of students.
 — The Centre for Academic Advising has recently been established. The centre believes that the fundamentals of a supportive and collaborative community of learning are driven by a strong academic advising programme at LUMS.
 — In order to institutionalize fund raising and strengthen relationships with alumni, the Resource Development and Alumni Affairs office has been established.
 — Office of the Provost has been established at LUMS. The position serves as the Chief Academic Officer and fulfills the university's mission to support excellence by advancing the frontiers of knowledge through the integration of research, teaching and service to others.
 — The Office of Graduate Studies and Sponsored Research has been established.
 — Faculty Council and University Council have been formed to ensure that governance at LUMS is a shared responsibility that includes students and faculty in the decision-making process.

MESSAGES FROM FRIENDS OF LUMS



Professor Robert S. Collins
Institute for Management Development (IMD)
Switzerland

It has been a privilege for me to have been associated with LUMS, as a member of the visiting committee, since its inception. Of course at that time LUMS was synonymous with the Graduate School of Business. Today, that is no longer the case as LUMS has evolved into a fully fledged university comprising three schools offering degrees at the under-

graduate, graduate and doctoral levels. Much has been accomplished in only 25 years. The transition from two converted residences in Gulberg, (with the two original auditoria constructed on the roof of one of them) to the modern and expanding campus in Defence has been accomplished in a very short period of time. This bears witness to the vision, commitment and tenacity of the founders. Personally, I'm not aware of any other academic institution that has built three Schools in such a short time span.

The recruiting of a quality faculty, for the most part with international experience, also has to be commended. When I first visited LUMS in February 1986, the entire faculty and academic administration could have lunch together at a table for eight!

It is appropriate to celebrate LUMS success in its Silver Jubilee Year, however, it is also incumbent on the members of each School to guard against complacency and, in furthering their separate missions, enhance LUMS' standing within the region.



Professor Robert L. Jaffe
Morningstar Professor of Physics and
MacVicar Faculty Fellow
Massachusetts Institute of Technology

BEING part of the planning and early years of the new School of Science and Engineering at LUMS has been a source of great satisfaction for me. My ties to Pakistan go back to the 1970's, when Prof. Pervez Hoodbhoy, then a student at MIT, and I began to collaborate on research into the substructure of matter.

In the 1980's when I visited Pakistan for the first time, I saw the need to provide educational opportunities to match enthusiasm that young Pakistani students have for fundamental science and engineering.

Some came to MIT to study and do research, and then returned in 2004 to introduce me to LUMS, to Syed Babar Ali, and to the SSE project.

Collaborating with them and with LUMS faculty and administrators on the birth of the SSE has been a great pleasure over the past six years.

It was particular honor to chair the SSE Advisory Board from 2006 through 2009.

Of all the rewards of this project, none has been greater than the chance to give a seminar to the first class of School of Science and Engineering (SSE) students in January 2009.

The brilliance and exuberance of the first SSE students made a lasting impression on me.

I saw the potential for a bright future if the energy of those students and thousands more like them can be applied to the great challenges that confront Pakistan as it faces the 21st century.



Professor Louis T. Wells
Herbert F. Johnson
Professor of International Management
Harvard Business School

It is a great pleasure to mark the 25th anniversary of LUMS. The founders were determined to create a much-needed centre of excellence in Pakistan and they succeeded. I fondly remember the discussions in the mid-1980s among the committed Pakistani business people and lawyers who were the original or very early supporters: in particu-

lar, I remember meetings with Syed Babar Ali, Razak Dawood, M.R. Khan, Naseem Mirza, Ch. Nazar Mohammad, D.M. Qureshi, Rafiq Saigol, Manzur ul Haq, Mian Altaf Saleem, Dr. Parvez Hassan, Nizam Shah, Yusuf H. Shirazi, along with Javed Hamid of the International Finance Corporation.

In those meetings the early critical decisions were made: orientation toward case method and practical problem-solving, development of Pakistani faculty and case material, offering an MBA program soon, and basic financing of the institution. Their support went far beyond the financial and intellectual. They provided sites for development of early cases, sent their managers to LUMS' new programmes, and especially important, showed their confidence by hiring early graduates.

I had the joy of watching the development of the beautiful campus, as the architect worked with faculty to combine the best features of business school campuses around the world, while retaining a wonderful Pakistani character to the facility. And then, the pleasure of watching the school expand into undergraduate studies to address a problem that at the outset was far from the minds of the founders and their advisors. Most important, it has all come together to produce a preeminent institution and a great contribution to Pakistan.



Dr. Pervez Hoodbhoy
Professor of Physics
Quaid-e-Azam University
Islamabad

TO establish properly functioning hospitals or factories in Pakistan is not an easy task, but to create a good university is much more challenging.

Having facilities and a nice looking campus - as several universities do have - is necessary but far from enough. A real university must be one that puts academic achieve-

ment as its first priority. It should have a forward looking world-view, a vibrant and open environment, high ethical standards, a sense of collegiality, and good governance practices.

In today's climate of skepticism, many have said that this cannot be done in Pakistan.

But LUMS brilliantly disproves this by providing an explicit counter-example.

One wishes this university success in its drive to recruit the best faculty and choose the best students.

And, of course, one also wishes that Pakistan could have many such universities that actually pay attention to academic matters.



Professor Richard C. Larson
Chair, SSE Advisory Board
Mitsui Professor of Engineering
Systems
Massachusetts Institute of Technology

LUMS is truly fortunate to have as long-term very committed supporters Syed Babar Ali, Abdul Razzak Dawood and all the other dedicated Board-of-Trustee members.

I am honored to serve on the Advisory Board of the new School of Science and Engineering (SSE).

This journey started over five years ago and is now bearing fruit in terms of new students, faculty, programmes and infrastruc-

ture. Very exciting! For LUMS. For Pakistan and its people. Personally, I have very much enjoyed each of the January trips I have made to LUMS. In addition to the inspiration of dedicated leadership at LUMS, I have come to know and respect Pakistan and its people.

It is indeed unfortunate that much of the world only sees Pakistan through popular news media seeking sensationalism. Now with its three schools all demonstrating excellence, LUMS has the opportunity to combine talents across schools to establish major new applied research programmes applied to the national needs of the country.

Virtually all of the major national needs - critical infrastructure, commerce, manufacturing, agriculture, energy and more - require the integrated talents of teams from science and engineering, management and the social sciences. Leave off any one of these, and only a portion of the problem is tackled. I hope to have the opportunity to work with LUMS over the coming years to build to this dream.



Asad Umar
President
Engro Corporation Limited

LUMS' 25 year anniversary marks a milestone in the history of academia in Pakistan.

When LUMS first opened its doors, it took a place amongst the country's finest institutions of learning.

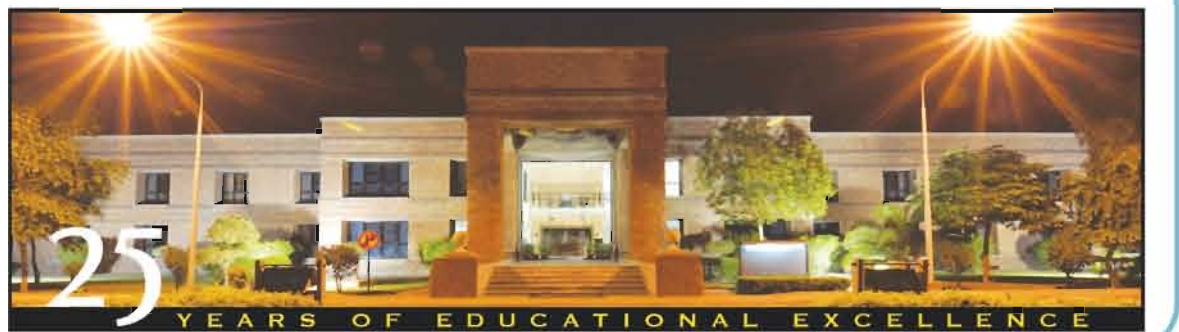
LUMS graduates have

made a mark on Pakistani industry and business, becoming valuable assets in organizations like ours.

Over the last 25 years, LUMS has honed many of the country's finest young minds, empowering its students to contribute richly to both the private and public spheres of Pakistan, and helping Pakistan move towards its true potential.

Today, LUMS qualifications are marks of high distinction in Pakistan and LUMS graduates are welcomed by firms across the world.

LUMS' commendable outreach programme has extended this opportunity for quality education to talented students from rural and disadvantaged backgrounds as well.



Developing business.

Developing business leaders.

Citibank congratulates LUMS on 25 years of educational excellence

As LUMS celebrates 25 years of creating business leaders, we at Citi celebrate being a part of its success. Along with introducing modern financial management solutions, Citi has joined hands with LUMS to pioneer multiple Corporate Social Responsibility initiatives:

- Created a \$105M endowment for academic scholarships (1996 - 1999)
- Launched 'Foundations of Corporate Governance': the first ever educational initiative on Corporate Governance in Pakistan, based on a \$200,000 Citi Foundation pledge (2003-2007)
- Launched a Management Development Training Programme for Microfinance Institutions based on a \$68,000 grant from the Citi Foundation (2009-2010)
- Launching 'Living Literacy, Changing Lives: Citi-LUMS Youth Initiative' and a joint CSR publication (2010-2011)

50th year in Pakistan & looking forward to the future
1961 - 2011

The years we leave behind give us much to look forward to

The seeds we helped these farmers plant, are bearing rich fruits

These farmers had the land, but little else. Khushhalbank helped them with a small loan so that they could put the land to good use. They planted saplings that are bearing rich fruits for them today. Over the last few years we have transformed the lives of many of these people. On our 10th anniversary we are proud to say that we have much to look forward to.

Celebrating

10th anniversary

A body corporate established under the Microfinance Institutions Ordinance, 2001

Schools at LUMS

THE three schools at LUMS have clearly made a mark in their respective fields for their unique pedagogical techniques and contribution towards the country's repertoire of superior multidisciplinary education.

Suleman Dawood School of Business (SDSB)

The Suleman Dawood School of Business (SDSB) was the first school established at LUMS in 1986. Now, 25 years and more than 2000 graduates later, it is ranked as one of the top business schools in the region. The primary teaching pedagogy at SDSB is the "Case Method of Teaching" which sets it apart from all other business institutes in the region. At SDSB, we exercise the Case Method of Teaching through close collaboration with Harvard Business School and the University of Western Ontario, both of which are pioneers in this teaching philosophy.

SDSB has a long-standing vision of achieving teaching and research excellence. Our progress is built upon internationally qualified faculty which is actively involved in first-rate academic and applied research both on global and regional levels. We take pride in our innovative and evolving curriculum, keeping it relevant by maintaining a close relationship with the business world.

SDSB offers an intensive full-time MBA, a modular Executive MBA, research-based doctorate in Management and a widely popular undergraduate programme in Accounting & Finance. Moreover, through our Rausing Executive Development Centre, we offer short duration regular and customised training programmes for execu-

tives. At SDSB, we have a diversified student body including significant international students. In addition, we also have active student and faculty exchange programmes with more than 14 universities world over.

In line with its mission of knowledge generation and dissemination, SDSB has three research centres working under its umbrella. These research centres, namely Strategic Sectors Research Centre, Case Research Centre and Social Enterprise Development Centre have strong national and international linkages. The SDSB faculty undertakes rigorous economic and management research while developing new cases in association with these research centres.

SDSB holds the prestigious South Asian Quality System (SAQS) accreditation from the Association of Management Development Institutions in South Asia (AMDISA). Adding further esteem to our global profile, we are the only school in South Asia being awarded a full member status by Association of Asia-Pacific Business Schools (AAPBS) and European Foundation for Management Development (EFMD).

At SDSB, we aim to provide for the varying educational needs of a culturally diverse and geographically dispersed student body. Our new purpose built campus, currently in the last stages of construction, is meant to provide best possible learning environment for our scholars and faculty. Our ultimate goal is to prepare students academically, personally, and professionally. At SDSB, we develop global leaders with comprehensive managerial calibre.

The relevant and innovative curriculum, high quality student intake, motivated and qualified faculty, world class facilities and well-placed global alumni body makes SDSB the

finest business school of the region.

School of Humanities, Social Sciences & Law (SHSSL)

The School of Humanities, Social Sciences and Law (SHSSL) enjoys a strong reputation of academic excellence, especially with its Departments of Humanities & Social Sciences and Economics considered as the strongest in Pakistan. Focusing on a multidisciplinary approach so that students study a mix of wide-ranging courses, SHSSL imparts long-serving and high-quality liberal arts education, touching on philosophy, sociology, anthropology and literature among others.

SHSSL has contributed greatly to the country's repertoire of superior multidisciplinary education in liberal arts. The faculty at SHSSL holds impressive credentials from leading international universities and includes acclaimed experts and scholars with significant publications to their credit. Many members of the faculty continue to advance within their respective research interests.

The Department of Humanities and Social Sciences (HSS) plays a vital role in the undergraduate programme at LUMS. It has over 30 full-time faculty members with diverse research interests and backgrounds with advanced degrees from leading universities in the world, including Berkeley, Cambridge, Columbia, Drew, Harvard, Johns Hopkins, Kent, LSE, McGill, Oxford, SOAS, Sorbonne, Sussex, Syracuse, and UCL. Many members of the faculty are widely published and renowned scholars who have distinguished themselves in their areas of expertise. The Department adopts an interdisciplinary focus and in addition to offering courses to anthropology/sociology, humanities & political science majors, it develops and teaches survey courses for students majoring in other disciplines. The Department aspires to the advancement of knowledge that is socially and ethically relevant through innovation and excellence in its academic programmes.



HSS also houses the Gurmani Centre which has been established for the promotion of Urdu, Persian and Arabic literature and language.

The Department of Economics is a growing and vibrant department that brings together quality faculty and student body. Having built its reputation as the premier institution for economics education in Pakistan, the department aspires to establish itself as an internationally recognized centre of theoretical and applied research in economics. It offers a four-year undergraduate programme as well as a Master's programme in Economics. At the undergraduate level students have the option of majoring in Economics, Economics and Politics or Economics and Mathematics. Almost fifty percent of the student body is enrolled in Economics either as a major, a joint degree programme or as a minor making it one of the most popular disciplines in the university.

The joint five-year B.A. LL.B. offered by the Department of Law and Policy combines the richness of our liberal arts education with a solid professional programme in law. Its pedagogical approach to law and policy is analytical, critical and comparative, and high premium is placed on faculty research and policy output. LUMS has highly trained faculty members who have completed their education from renowned universities such as Harvard, Yale, Oxford, British Columbia, Notre

Dame, Michigan, Warwick and London School of Economics. The curricular breadth of the Programme ranges from substantive law courses to clinical courses and moot court exercises, supervised research options, and advanced interdisciplinary elective courses, many of which are cross-listed with the social sciences and humanities.

This provides the students with a strong base to enter any professional career that stems from law. The excellent performance of the first three batches of graduates demonstrates the capacity of the Programme to rapidly generate a demand for highly skilled, deeply informed, and well-rounded legal brains in a large number of legal and law-related settings.

School of Science and Engineering (SSE)

The School of Science and Engineering (SSE) is the first private research school in Pakistan. Modeled on some of the leading universities of the world, it aims to be a paradigm shift for science and engineering education in the country. The mission of SSE is to produce quality graduates who are technically competent problem solvers, create knowledge through its research on issues of local and global relevance, and to become a doorway of opportunity for under-

privileged students who would otherwise have little chance of obtaining a world-class education.

SSE offers a four-year BS degree in Biology, Chemistry, Computer Science, Electrical Engineering, Mathematics and Physics. Based on the 'no boundaries' philosophy of SSE, for the first year all students follow a common, core curriculum which is very strong in fundamental sciences and mathematics, includes a large humanities and social science component, and gives students exposure to advanced technology subjects at an introductory level. The core curriculum prepares students for interdisciplinary modern research by blurring artificial divisions between different disciplines. It also allows them to study a variety of subjects without forcing them to choose a specialisation too early. Design projects and hands-on, state-of-the-art labs are also integral to the undergraduate experience at SSE. Students declare their major at the end of the first year after which they begin to take specialized courses in their field of choice. There is no specific quota for any discipline; students are free to pursue their area of interest provided they fulfill the pre-requisites for that major and maintain the required GPA.

SSE also offers graduate degrees in Computer Engineering, Computer Science (MS & PhD) and Mathematics (PhD). These programmes provide the solid foundation upon which additional undergraduate and graduate pro-

grammes, including Biological Engineering, Chemical Engineering, Material Science and Mechanical Engineering etc will be built on at a later stage. The graduate programme is structured to enable students to do an in-depth study of a specialized area within the discipline of their choice. The stress here is on research and independent study. The faculty provides the necessary mentoring to help students reach their potential. Beyond the core subjects areas each student has the flexibility of tailoring the course work to suit their interest. Our current graduate students regularly present their work at international venues, collaborate with the leading research labs, and intern at first-class institutions in the world.

Quality faculty is undoubtedly one of the pillars of a world-class institution. SSE's faculty is the key to realizing its vision of an excellent research school. Currently the growing number of over sixty faculty members includes some of the best Pakistani scientists and engineers trained at institutions such as MIT, Caltech, Berkeley, Stanford, Oxford, Cambridge, Harvard, Princeton, Imperial, Yale. The students, also instrumental to the mission of the SSE, are amongst the best and the brightest of Pakistan. Chosen after a rigorous admission process, they represent a wide social spectrum which can be attributed to the need-blind admissions policy which ensures that SSE delivers on its commitment of quality education for all rather than a privileged few. Research and teaching at SSE is carried out in a 300,000 sqft purpose built complex located on the existing LUMS campus. Consisting of state-of-the-art teaching and research labs and equipped with the latest instrumentation, it is instrumental for SSE's vision of multi-disciplinary research and education.

SSE is premised on a hope; that by getting the best minds of Pakistan and providing them with the necessary tools, it can influence the destiny of a nation. It is confident that its graduates will be change-agents who will contribute to the frontiers of knowledge and transform life as we know it.

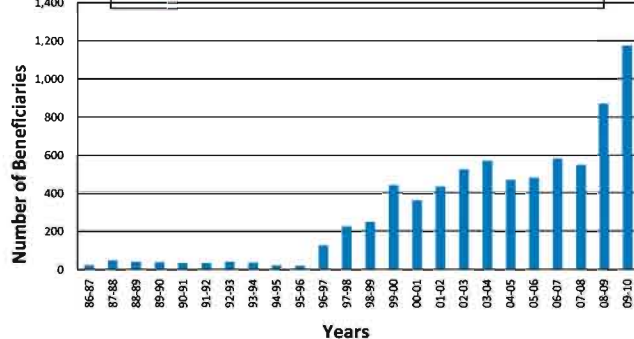
Financial Assistance

To maximize its outreach, LUMS provides financial aid to the deserving students. Presently, out of the total of 2742 enrolled students, 853 are getting full or partial financial aid, 319 are admitted through NOP and 1570 are self-supported. To-date, the total financial aid disbursed by LUMS is Rs. 1.2 billion approx.

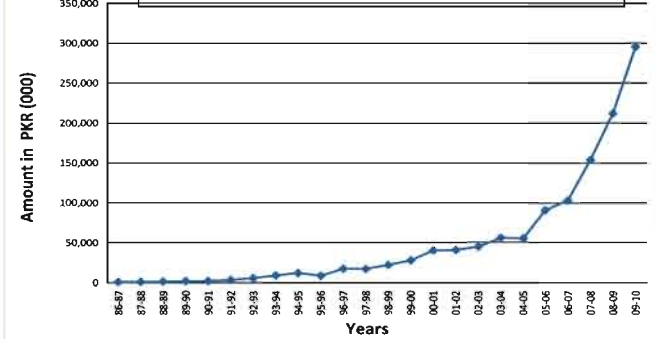
Total Financial Aid disbursed in PKR for the current period 2010-2011

BSc. & BA-LL.B. (SHSSL & SDSB)	102,465,000
B.S. (SSE)	58,870,000
SSE (NOP)	46,550,000
SHSSL & SDSB (NOP)	81,765,000
M.S. CS/CE	7,038,000
M.S. (Economics)	2,691,000
Ph.D. (CS, CMPE)	2,856,000
Ph.D. (Mathematics)	4,284,000
M.B.A	18,040,000
Ph.D. (Management)	7,700,000

Recipients of Financial Aid Since 1986



Financial Aid Disbursed Since 1986



ENGINEERING FOR LIFE!

Millat Tractors Ltd. has played a pivotal role in Pakistan's Agriculture and Industrial sector for over four decades. Our six dependable tractor models excel in quality and cater to the farming needs and buying power of Pakistani farmers.

To the Industrial sector we offer quality Fork Lift Trucks and Power Generator Sets as reliable, low-cost solutions for better performance and peace of mind.

For Millat, engineering is not a profession, it's our passion!



MILLAT TRACTORS LIMITED
9 KM, Sheikhpura Road, Shahdara, Lahore-Pakistan

	LAHORE	KARACHI	ISLAMABAD	MULTAN	SUKKAR
PHONE	37911021-25	34563762	2271470	6637371	5633042
	111-200-786	111-200-786	111-200-786		
FAX	37925835	34566321	2270693	6639271	5633187

www.millat.com.pk



VELOCITY

پیشگی منافع اکاؤنٹ askari

Invest today – Profit right away



Get Rs. **12,000*** upfront Profit
on deposit of every 100,000 Rupees with

پیشگی منافع اکاؤنٹ askari

Minimum deposit Rs. 100,000 or in multiple of 100,000.

Additional Benefits for Customers:

- 1- Financing facility up to 80% of Principal amount.
- 2- Free Visa Debit Card issuance.
- 3- Free Accidental Life Insurance coverage up to Rs.500,000.
- 4- No Minimum Balance requirement in checking account.
- 5- 2 Free Pay Orders** in a month.
- 6- No maximum limit for investment.

For more information:

Toll Free No. 0800-00078

Website: www.askaribank.com.pk

askaribank



askUS

*on 15 month deposit - expected rate of return 9.6% p.a.
**withholding tax and any other Govt. charges as per law.
On premature encashment terms & conditions apply.

Research at LUMS

RESearch is critical to achieving LUMS mission of becoming a pre-eminent institution, serving as a catalyst for economic prosperity and social development with a focus on management of resources. The research centres at LUMS are committed to undertaking basic and applied research in all fields for knowledge creation and preparing students to become thoughtful and effective leaders.

SDSB Research Centres

Strategic Sectors Research Centre (SSRC)

Strategic Sectors Research Centre (SSRC) is a new initiative in institutionalizing research and knowledge generation at SDSB. The vision of SSRC is "to become a national, research-based think tank in sectors important to the national economy". This centre is expected to generate scholarship in strategic sectors including development (education management, health management, and entrepreneurship) and economic sectors (energy and water management, agribusiness, textiles, food, banking, sports goods & pharmaceuticals). SSRC is also expected to boost research and its dissemination by SDSB. The centre has engaged industry specialists and top SDSB faculty for achieving its objectives.

Case Research Centre (CRC)

The Case Research Centre (CRC) is the case writing hub of SDSB. It is instrumental in bringing the local industry to the classroom setting and gives our students the opportunity to understand South Asian markets. It plays a coordinating and editorial role in the development of well-researched case studies written by the SDSB faculty. The aim of CRC is to encourage and support case writing and teaching in Pakistan and South Asia. The centre has established relationships with the European Case Clearing House (ECCH) and Harvard Business School (HBS) that enables the SDSB faculty to access case studies from all of the major case producing management schools of the world.

CRC has a database of more than 500 cases/industry notes written by the SDSB faculty. Additionally, many cases/notes are in the process of being developed. These Pakistan-specific cases are drawn from real life issues in organizations and experienced firsthand by our faculty as a result of research or consultation. In order to ensure objectivity and consistent high quality of the case studies, all cases written by the LUMS faculty for the CRC go through two reviews before being finalized.

Social Enterprise Development Centre (SEDC)

The Social Enterprise Management Programme (SEMP) was launched in July 2001 by LUMS and McGill University, Canada, with financial support from

Canadian International Development Agency (CIDA). In 2007, SEMP was converted into Social Enterprise Development Centre (SEDC). SEDC serves as a scholarship-based research centre working towards the capacity building of social enterprises in Pakistan.

The centre has successfully developed linkages with more than 500 social sector organisations of Pakistan; a unique achievement for any academic institute. SEDC has formed geographic chapters in Lahore, Karachi, Multan, Peshawar, Rawalpindi/Islamabad and Quetta. This national outreach gives it the credibility to undertake operations nationwide.

To date, SEDC has published more than 170 case studies and notes written by the LUMS faculty for the social sector. It has also published 6 casebooks on social sector with several more in process. The centre also assists development professionals to network, collaborate and take on policy initiatives jointly. It offers customised and open-enrolment training programmes for NGOs in various aspects of capacity building.

SSE Research Centre

Centre for Advanced Studies in Mathematics (CASM)

The Centre for Advanced Studies in Mathematics (CASM) aims to provide the best resource centre and excellent learning place for mathematics. It serves as a platform for interaction with the local industry & trading institutions and aspires to promote interaction between mathematicians and experts of other disciplines, such as electrical and computer engineering, economics and social sciences.

The centre is actively engaged in conducting research, organizing workshops/conferences, arranging short courses, and exploring linkages with other disciplines among others. CASM provides funding for research activities in various ways depending upon the type and duration of the proposed activity. Successful proposals are funded on first-come-first-serve basis while acceptance of new proposals is conditioned upon the availability of funds.

SHSSL Research Centre

Development Policy Research Centre (DPRC)

The Development Policy Research Centre (DPRC) is envisaged as a knowledge centre structured around core socio-economic development themes with the objective of carrying out cutting edge multi-disciplinary research. It combines the disciplines of social sciences and law to strengthen evidence-based policymaking. The centre is structured to disseminate its findings through publications, seminars, workshops, conferences and policy advocacy forums. Through DPRC, the School of Humanities, Social Sciences and Law (SHSSL) expects to develop a culture

of consolidated academic research, integrate the knowledge into classroom teaching materials and establish collaborative linkages with domestic and international research institutions.

SHSSL is widely regarded as a school of meritable academic repute, both within Pakistan and internationally. Its faculty has an established track record of excellence in academic and applied research, including collaborative research networks with reputed Pakistani and international research institutions. Several faculty members are also providing advisory services on important forums.

In the following years, DPRC will provide a platform to channel this expertise towards sustained, thematic research work and contribute to evidence-based policy making and public discussion. The research will be disseminated amongst policymakers, politicians, the private sector and the academia. Media will also be engaged to highlight the centre's activities through op-eds and focused television programs.

Executive Education

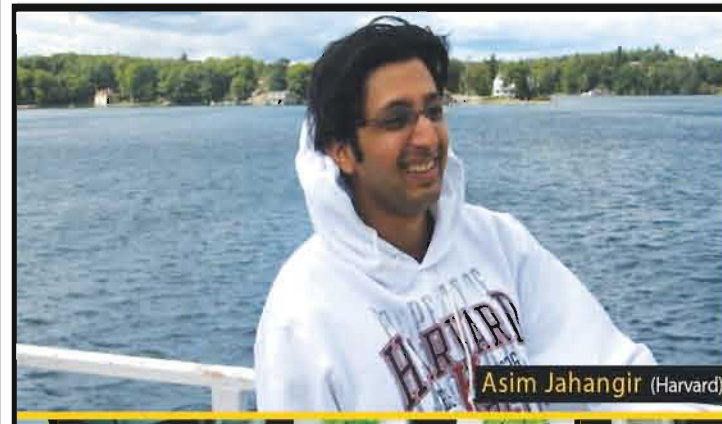
Raising Executive Development Centre (REDC)

SULEMAN Dawood School of Business offers special development courses for executives through its Raising Executive Development Centre (REDC). Established in 1989, REDC is housed in a purpose-built facility for training in business education. It offers a wide range of executive development and training programmes, effectively responding to the evolving development needs of managers and leaders around the globe.

REDC offers both Open-Enrolment and Organisation-Focused Programmes. The centre is ideally positioned to prepare managers for new challenges through close industry links, investment in national and international case studies, and a rigorous academic focus. It gives managers an opportunity to enhance their effectiveness and the competitiveness of their companies. REDC has collaborated with international institutes like INSEAD-France, International Human Resource Development Corporation, World Bank, McGill University-Canada, Commonwealth Secretariat-United Kingdom etc. for different training courses. It has also successfully conducted organisation-focused programmes for international companies like Telenor Pakistan Ltd.; Tetrapak Ltd.; United Nations Development Programme (UNDP); Unilever (Pvt.) Ltd.; Savola Food Sector, Saudi Arabia; and Shell Pakistan etc. To date REDC has over 20,000 alumni from Pakistan and abroad.

REDC is a member of The International University Consortium for Executive Education (UNICON), an organisation of leading business schools worldwide with a serious commitment to executive education and management development.

National Outreach Programme (NOP)



Asim Jahangir (Harvard)



Yasir (Columbia) Karrar (Harvard)

LAUNCHED in 2001, the National Outreach Programme (NOP) is a development initiative aimed at targeting talent from under-privileged areas of Pakistan, offering them full financial assistance if they meet the rigorous LUMS admissions criteria.

LUMS undertakes various activities to tap talented students from all over the country. Liaisons are established with boards of intermediate and secondary education to identify talented students from various parts of the country.

Furthermore, schools/colleges producing bright students belonging to modest backgrounds are identified and presentations are carried out to create awareness amongst the students

and teachers in these institutions. Evaluation tests are then conducted to shortlist candidates who meet LUMS requirements. Coaching sessions for students passing the evaluation tests are arranged in various cities to prepare them for the LUMS entry test and successful candidates are awarded full financial assistance for study at LUMS.

Rigorous efforts have resulted in the induction of 406 students to the undergraduate programmes to date from the outreach stream, out of which 80 were inducted this year alone.

Around 45 NOP Scholars have graduated so far. 9 of these have received Fulbright Scholarship and have joined top universities such as Harvard; Columbia University; Georgia

Institute of Technology; Ohio State University; Cornell University; National University of Singapore; Institute of Islamic Studies, UK & Columbia University. 5 students have attended semesters at foreign universities such as FH Joanneum, Waseda University and College of William & Mary. Graduates of NOP have joined leading organizations such as Deloitte, UK; Unilever; Procter and Gamble; MTBC, International Petrochemicals Pvt. Ltd.; United Bank Limited; Confiz Solutions; Standard Chartered Bank; Colony Group; Al-Ghanim Industries, Kuwait; Habib Bank AG Zurich and Habib Bank Limited.

LUMS National Outreach Programme is beginning to be recognized all over Pakistan. To date, our efforts have extended the

programme to over 40 cities/towns that include Attock, Bannu, Chakwal, Chunian, Gilgit, Ghotki, Hunza, Kasur, Khanewal, Mansehra, Mardan, Pakpattan, Quetta, Sanghar, Swat, Sharaqpur, Sukkur, Swabi, Swat, Ghizer, Malakand, Dadu, Jacobabad, Shikarpur, Lodhran, Mastung, Timergara, Toba Tek Singh, Vehari and Uch among others.

We aim to induct at least 25% of the total students through this scholarship programme in the next 2-3 years and firmly believe that students graduating from this programme act as role models for their communities and will contribute towards changing the destiny of many more deserving students in the years to come. For more information log on to <http://nop.lums.edu.pk/>



“The generous Donors of”
LUMS



Thanks to our donors we are able to ensure that LUMS continues to be a world class institution of learning. We would like to assure our donors that their support helps make a considerable difference in the fields of research and future developments at LUMS.

Chair Funds

- Abdus Salam Chair Fund
- Ahmed Dawood Chair Fund
- Haji Shafi Chair Fund
- Jamil Nishter Chair Fund
- Mitsubishi Corporation Chair Fund
- Mentor Graphics Chair Fund
- Siemens Germany Chair Fund

Donations

- ABN Amro Bank
- Abdul Hafeez Shafi Endowment Fund
- Abdul Razak Dawood
- Abdul Razzak Tappa / Lucky Cement Scholarship Fund
- Adnan Textile Mills
- AES Lalpir Pvt. Limited
- Aftab Associates
- Akbar Group of Companies
- Al Ghurair Group
- Al Khair Group
- Alfa Petroleum
- Ali Munir Fund
- Ali Omar Almakky
- All Pakistan Textile Mills Associates
- Allied Bank Limited
- American Express Bank
- Ammar Textiles Pvt. Limited
- Arabtec Pakistan Pvt. Limited
- Arif Habib Securities Limited
- Arifa Asad Scholarship Fund
- Asad Abidi
- Asad Foundation
- Asghar Ali Scholarship Fund
- Ashraf Nawabi Fund
- Ashraf Riaz Scholarship Fund
- Asian Cooperative Society Limited
- Asian Development Bank
- Askari Bank Limited
- Aslam Khan Fund
- Atlas Foundation
- Atlas Group
- Attock Refinery Limited
- B. Mitchell

- Babar Ali Foundation
- Bahrain Scholarship
- Bank of America
- Banker's Equity Limited
- Barclays Bank
- Bata Pakistan Limited
- Bayer CropScience
- Bayer Pakistan Limited
- BCCI Foundation
- Bestway Foundation
- Bilal Musharrif
- Burque Corporation
- Cherat Cement Company Limited
- Choudhary Wire Rope Industries
- Ciba Giegy Pakistan Limited
- CIDA
- Citibank NA
- Coca-Cola Foundation
- Coca-Cola Export Corporation
- Crescent Steel & Allied Products Limited
- Crescent Textile Mills Limited
- Cupola Plastic Cards Limited
- Danish Lakhani
- Danyal Mahmood
- Dawood Family
- Dawood Foundation
- Dawood Hercules Chemical Limited
- Delta Industries Pvt. Limited
- Descon Engineers Limited
- Deutsche Bank
- DIC Pakistan Limited
- Director Education Balochistan
- Dr. Yasir Mahmood
- EFU - General Insurance Limited
- English Biscuit Manufacturers Pvt. Limited
- Engro Chemical Pakistan Limited
- Eram Hassan
- Eye Television Network (HUM TV)
- Farah & Shahzad Benevolent Fund
- Fauji Fertilizer Company Limited
- Ferozsons Laboratories Limited
- First Inter Investment Bank
- Friends of LUMS Canada Endowment Fund

- Frontier Education Foundation
- Government of Pakistan
- Government of Punjab
- Gulf Group of Companies
- Gullistan Group
- Gurmani Foundation
- Habib Group
- Habib Metropolitan Bank
- Haq Enterprises
- Higher Education Commission
- Hillary Clinton
- Himont Group
- Hoechst Pakistan Limited
- House of Habib
- Hussein and Kalsum Dawood Endowment Fund
- Hussein Dawood
- ICI Pakistan
- International Development Research Centre (IDRC)
- Idris A. Kalthori
- IGI Insurance Fund
- Indus Motor Company Limited
- Industrial Development Bank of Pakistan
- International Development Bank of Pakistan
- International Chemplast Pvt. Limited
- International Industries Limited
- Irfan Mustafa
- Irfan Ullah Khan Scholarship Fund
- Irshad Ahmed
- JICA
- K W F Factors Pvt. Limited
- Kaniz Arshad Chaudhry
- KASB Group
- Khawaja Iqbal Ahmed Scholarship Fund
- Khushhali Bank
- Kohinor Technical & Management Services Limited
- Kot Addu Power Company
- KSB. Pumps Company Limited
- Lahore Chamber of Commerce & Industry (LCCI)
- Lahore Stock Exchange
- Lakson Tobacco Company Limited
- Lever Brothers Pakistan Limited
- Lipton Pakistan Limited
- Mahvash & Jahangir Siddiqui Foundation

- Major (Retd.) Shahid Ata-Ullah
- Maple Leaf Cement Factory Limited
- Mayfair Spinning Mills Limited
- Metropolitan Bank
- Millat Group of Companies
- Millat Tractors Limited
- Ministry of Science & Technology (MoST)
- Mitsubishi Corporation Japan
- Mobilink
- Mobilink Foundation
- Mrs. Aleem Fund
- Mustafa Baig
- Nagina Scholarship Fund
- National Engineering and Scientific Commission
- National Engineering Services Pakistan Pvt. Limited
- National Fertilizer Corporation
- National Insurance Corporation
- National Management Foundation
- Nauman Ahmed Khan
- Naveed Sultan
- National Development Finance Corporation (NDFC)
- Nestle Pakistan Limited
- Netsol Technologies
- NIB Bank Limited
- Nosheen & Jahanzeb Sherwani Endowment Fund
- Old Grammarian's Society
- Orix Investment
- Osama Khalid Waheed
- Packages Limited
- Pak Elektron Limited (PEL)
- Pak Kuwait Investment Company Limited
- Pakistan Automobiles
- Pakistan Banking Council
- Pakistan Barmah Shell Limited
- Pakistan Industrial Credit & Investment Corporation
- Pakistan International Airlines Corporation
- Pakistan Mobile Communication Limited
- Pakistan Oil Fields
- Pakistan Petroleum Limited
- Pakistan State Oil
- Pakistan Tobacco Company Limited
- PepsiCo International
- Philips Electrical Company Limited

- PICIC Commercial Bank
- Procter & Gamble Pakistan Pvt. Limited
- Punjab Beverages Company Pvt. Limited
- Punjab Educational Endowment Fund
- Punjab Information Technology Board
- Punjarya Limited
- Rafique Engineering Industries
- Rahim Jan Scholarship Fund
- Rausing Family
- Robert Cotton Associates
- Roche Pakistan Limited
- Sadar Anjman Ahmadian
- Saeed Ul Hassan Scholarship Fund
- Salal Humair
- Salman Butt
- Sanofi Aventis Limited
- Sapphire Fibres Limited
- Saudi Pak Agricultural Investment Corporation
- Shahnawaz Pvt. Limited
- Schlumberger Seaco Inc.
- Service Industries Limited
- Shahtaj Sugar Mills Limited
- Shahtaj Textile Limited
- Shahzad Naqvi
- Shahzada Dawood
- Shakarganj Mills Limited
- Shell Pakistan Limited
- Shezan International Limited
- Shezan Services Pvt. Limited
- Siemens Pakistan Engineering Company Limited
- Standard Chartered Bank
- State Cement Corporation of Pakistan Pvt. Limited
- Sui Northern Gas Pipelines Limited
- Sui Southern Gas Company Limited
- Shaukat Mirza Chair Fund (PSO)
- Syed Babar Ali
- Syed Javed Hassan Endowment Fund
- Syed Maratab Ali Religious & Charitable Trust Society
- Syed Muhammad Haider Endowment Fund
- Syed Sibtul Hassan Shah
- Syed Zahoor Hassan
- Syeda Ghulam Batool

- Syeda Mehboob Begum Endowment Fund
 - Tetra Laval
 - Tetra Pak Endowment Fund
 - Tri-pack Films Limited
 - Uch Power Limited
 - Unilever Pakistan Limited
 - United Bank Limited
 - University Grants Commission
 - USA Alumni
 - USAID
 - Zakir H. Shirazi Scholarship Fund
 - Zephyr Textile Limited
- ### Class Gifts
- BSc 1998
 - BSc 1999
 - BSc 2000-1
 - BSc 2002
 - BSc 2004
 - BSc 2006
 - BSc 2007
 - BSc-2009
 - MBA 1989
 - MBA 1991
 - MBA 1992
 - MBA 1994
 - MBA 1999
 - MBA 2002
 - MBA 2006
 - MBA 2007
 - MS 2005
 - MSc Econ 2010

List updated as of September 13, 2010